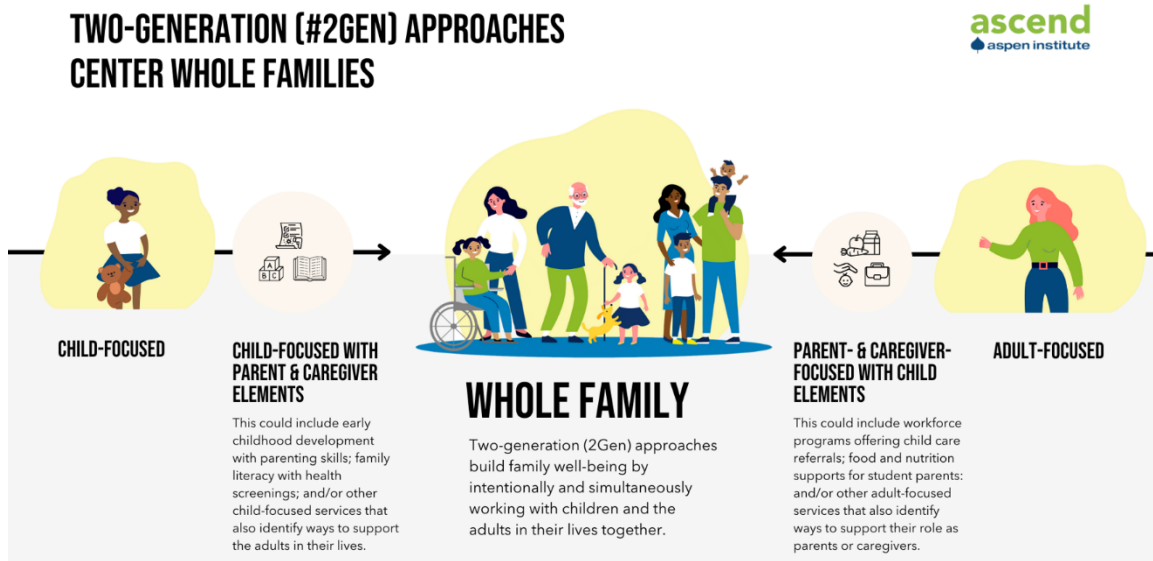


What is the Two-Generation Approach?

The two-generation approach (2Gen) is a framework that leverages the strengths, resources, and motivation of families and communities to create a pathway for economic mobility and prosperity. It focuses on supporting whole families by recognizing the importance of working with both children and parents/caregivers together. By using a holistic, family-centered lens, the approach aims to promote positive outcomes by considering various pathways and dimensions of families.

An image from Ascend illustrates this continuum and emphasizes the movement to the center for integration of whole family services, goals and outcomes.



The 2Gen approach aims to increase income for families while promoting overall family well-being. It includes:

1. Simultaneous services for adults and children with integrated whole family goal planning
2. Continuous program evaluation and feedback collection, including adult and child voice
3. Support for adult living wage employment
4. Support of child development and education (focus on 0-12 years of age)
5. Intentional opportunities for families to increase their social capital
6. A commitment to equity

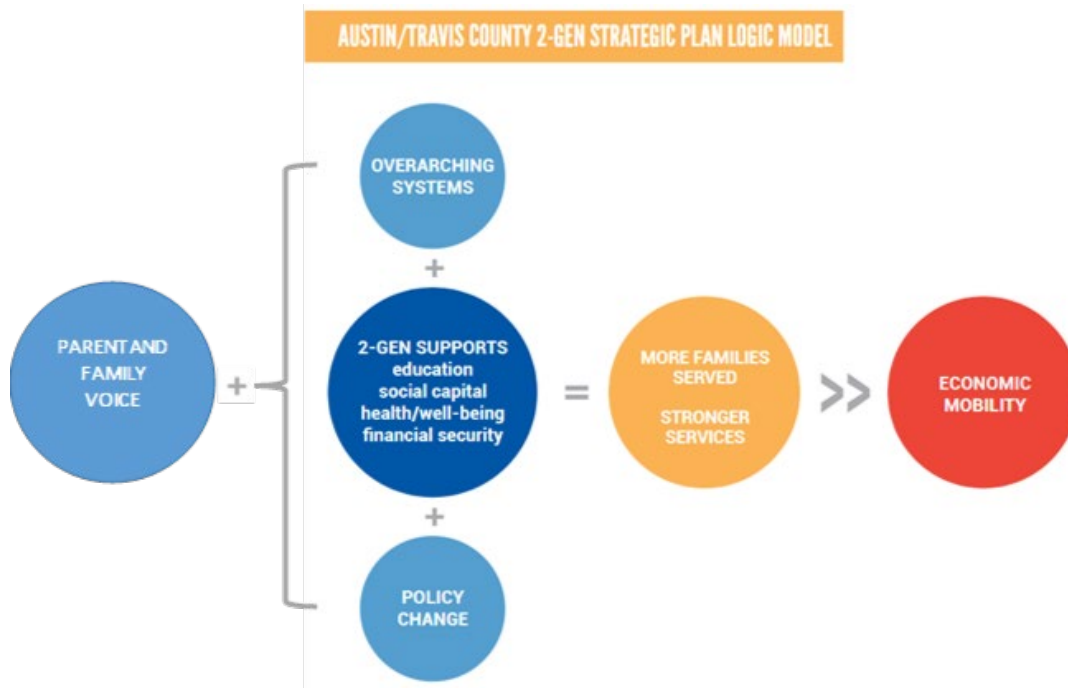
The centering of family voice and equity are fundamental components throughout all stages of 2Gen approaches, from initial brainstorming through to implementation and evaluation. The 2Gen approach aims to build overall family wellbeing, including the financial, social, mental, and spiritual aspects of families. It utilizes a framework consisting of six interconnected components: social capital, health and wellbeing, economic assets, post-secondary education and employment pathways, K-12 education and early childhood education. These components are essential for families to thrive and require coordination of services and community partnerships. This approach believes in the expertise of parents and caregivers. It focuses on supporting families' already existent internal resources and eliminating barriers in the pathway as a means to unlock family potential to reach greater economic mobility and wellbeing.

The Connection between the 2Gen Approach and Increased Economic Mobility for Families

The 2Gen approach recognizes that achieving economic mobility for families requires listening to family voice to inform advocacy, system change, and service provision. It involves looking at systems from a whole family perspective, prioritizing equity, and utilizing research and evidence at all levels. This is a bipartisan approach to supporting healthy, thriving communities that is gaining momentum nationwide. Research shows that this approach produces strong results and has a high return on investment, as the positive outcomes for both

parents and children are greater when addressed through a 2Gen approach than when they are addressed separately. By integrating child and parent support and prioritizing coordination and cooperation between programs, the 2Gen approach maximizes community resources and achieves a multiplier effect across and within generations.

The theory of change is based on the logic model from the Austin and Travis County United Way:



STRATEGIC PRIORITIES	EDUCATIONAL SUCCESS	FINANCIAL SECURITY	SOCIAL CAPITAL	HEALTH & WELL-BEING
FAMILIES HAVE ACCESS TO	Early childhood education, out-of-school time, adult education, and training	Financial education, and income-accessible financial products and services	Parenting/caregiving education, social networks, and professional networks	Physical and mental health resources and services
CHILD OUTCOMES	Improved school readiness and academic outcomes	Improved overall stability	Increased support and connection to parents/caregivers	Improved physical and mental health outcomes
PARENT/CAREGIVER OUTCOMES	Education/employment advancement and a family-sustaining wage	Progress toward financial goals	Improved ability to support child through stronger networks and increased awareness of community resources	Improved physical and mental health outcomes
SYSTEM IMPROVEMENTS	Strategic 2-Gen Partnerships Holistic Case Management Parent/Caregiver Leadership Opportunities Immigration Status-Sensitive Services Focus on Underserved Communities Family-Centered Policies			